

Historic, Archive Document

Do not assume content reflects current scientific knowledge, policies, or practices.



Fall Is the Best Time to Plant Lilacs. See page 14 for Varieties and Descriptions

Peonies, Bulbs, Poppies and Other Specialties

*Our large 64-page descriptive
Catalogue, "Everything That's
Good and Hardy," will gladly
be sent on request.*

The Cole Nursery Company

49 YEARS AT

PAINESVILLE, OHIO

700 ACRES • PLANT IN AUTUMN FOR SPRING BEAUTY



Autumn Planting Brings Its Reward in Gay Spring Colors

EVERY spring there are many who, on seeing a beautiful display of early flowers, declare they will plant a garden "next autumn," only to neglect the matter and regret it. Early flowers, coming after our long and dreary winter, are the most welcome and seem the most beautiful. They are of simple culture and almost sure to grow and make a gorgeous display, even for the gardening novice. Planting may be done any time before the ground freezes, but do not neglect to plant in the autumn.

COLE'S FRIENDSHIP OFFER

We have won thousands of friends by our generous Friendship Offers, and are extremely glad to offer, this year, the biggest and most attractive of all.

ALL DELIVERY, Express, Freight, Mail, Truck PAID BY COLE

Except foreign and to states west of and including Montana, Wyoming, Colorado and New Mexico. (Customers from these states kindly add 15 per cent to our printed prices.)

Equal to a 10 to 20 per cent reduction in prices

Because we have NOT raised prices to cover this cost

A BIG SAVING TO YOU

Quantity production of millions of plants on 700 acres allows us to pass this big saving along to you and yet give the same *quality* and *service* (direct from the grower) that has increased our retail business 500 per cent in 5 years.

No worry about EXTRA COST. Cole Guarantees Safe Delivery

THE PEONY



WE WISH we might have the pleasure of showing each one who receives this Catalogue through our acres of Peonies. Possibly you were one of the many welcome visitors who the past season were thrilled with the sight of thousands of gorgeous blooms in one large field—and then marveled at the individual beauty of such creations as *Primevère*, *Reine Hortense*, *Sarah Bernhardt*, *Solange*, and *Therese*.

We have studied this stock very carefully and have eliminated all varieties of questionable value, which gives us an extraordinarily high-class collection and assures you a well-worthy Peony, no matter which one you may select. Note the general high rating throughout the list.

The Peony is a close rival of the rose, either for planting or for cutting. Its iron-clad hardiness, adaptability to varying soil and locations, its wealth of bloom, richness of fragrance, and variety of color, all go to make it a general favorite. So we find it in a single clump by the cottage door or in pleasing variety in the flower-garden; in costly and rare varieties in the grounds of the collector; and in extensive plantings in parks and in the grounds of the wealthy.

We send out strong, healthy, 3- to 5-eye plants, not the small, 2- to 3-eye divisions so often sold and which we believe are too small to give satisfaction. Our plants will often throw one or two good blooms the first season. For more immediate effect, we advise the 5- to 9-eye, 3-year clumps.

September and October are the best months in which to plant Peonies, although they are planted fairly satisfactorily in March or early April. In planting, cover the "eyes" with about 2 inches of soil and use a slight mulch. Too deep planting is the cause of many Peonies not blooming. Fertilize with bone-meal and wood ashes. The figure on the margin is the rating given by the Peony Society, using 10 as a perfect Peony. You will note that we are listing only about fifty of the best kinds, making a good, concise list which we believe will fill your requirements. However, we have nearly 200 other varieties and would be glad to quote you on any special variety you want. Prices quoted are for plants with 3 to 5 eyes. Plants with 5 to 9 eyes furnished at twice the price of the 3- to 5-eye plants.

A Descriptive List of Choice Peonies

8.6 Albert Crousse. (Crousse, 1893.) Light rose-pink, with a creamy tone, richly tinted with flesh-pink in a deep rose-like center when fully open; mildly fragrant. Tall; profuse bloomer; strong stems and good foliage. One of the very best late Peonies which is described by many as salmon-pink. 90 cts. each, \$8 for 10.

7.1 Alexandre Dumas. (Guérin, 1862.) Bright, lively pink, marked with white and salmon. Early. A very pretty tricolor. 60 cts. each, \$5 for 10.

7.8 Augustin d'Hour. (Calot, 1867.) Large; bomb shape. Deep, brilliant solferino-red. Midseason. 90 cts. each, \$8 for 10.

8.0 Aurore. (Dessert, 1904.) Loose, lilac-white, center flecked with crimson; stamens conspicuous. A fine sort. Late midseason. \$1.25 each, \$11 for 10.

8.7 Avalanche. Syn., *Albatre*. (Crousse, 1886.) Blush-white of waxy texture, with edges of some petals marked crimson. Large; late midseason. A grand flower. 75 cts. each, \$6.50 for 10.

8.0 Boule de Neige. (Calot, 1862.) White, with sulphur center, inner petals margined with carmine. Dainty and beautiful. Early midseason. 50 cts. each, \$4 for 10.



Peony Karl Rosenfield. Described on page 5

10 rate applies to 5 or more of one variety; 100 rate applies to 25 or more of one variety.

CHOICE PEONIES,
continued

- 9.0 Baroness Schroeder.** (Kelway, 1889.) Pale flesh-white, tinted cream; outer petals frequently shaded with faint pink; fragrant. Tall; free-flowering; strong stems; excellent foliage. A bouquet will often last more than a week in the home. Late mid-season. \$1.30 each, \$11.50 for 10.
- 8.1 Couronne d'Or.** (Calot, 1873.) Very large, ball-shaped bloom; snow-white, with carmine edges and a ring of yellow stamens around the center petals. Strong grower and free bloomer. Grand. Late midseason. 60 cts. each, \$5 for 10.
- 8.1 Duchesse de Nemours.** (Calot, 1856.) Beautiful sulphur-white bloom, fading to pure white. Early. 50 cts. each, \$4 for 10.
- 7.6 Edulis Superba.** (Lemon, 1824.) Bright old-rose-pink; very fragrant. Tall; extremely floriferous; excellent foliage; very early. An old, tried, and true variety which should rate much higher. 60 cts. each, \$5 for 10.
- 8.3 Eugene Bigot.** (Dessert, 1894.) Crimson with violet tinge, brightened by silvery tips and numerous yellow stamens; fragrance pleasant. Floriferous; foliage good; late. \$1.25 each, \$11 for 10.
- 8.6 Eugenie Verdier.** (Calot, 1864.) Rose-pink, paling to a beautiful blush at tips of petals. A very large and beautiful bloom of excellent form and texture. Early midseason. \$1.25 each, \$11 for 10.
- 8.4 Felix Crousse.** (Crousse, 1881.) Large, ball-shaped, brilliant red, with ruby center. Very attractive and desirable. Late midseason. 90 cts. each, \$8 for 10.



Peony Solange. Described on page 6

- 9.3 Festiva Maxima.** (Miellez, 1851.) Very large; free bloomer; pure white, with carmine-touched center; strong stems. Early. 50 cts. each, \$4 for 10.
- 7.5 Floral Treasure.** Syn., Delicatissima. (Rosenfield, 1900.) Light pink; early; large. A fine, free-blooming sort and extra good for cutting. 60 cts. each, \$5 for 10.

Cole's Choice Peony Collection, No. 3

These beautiful Peonies are far more gorgeous than the average seen in most home plantings. This Collection, as well as others offered, is especially selected to give you a large range of beautiful colors over a long blooming period.

This superb selection gives you at least 4 to 5 weeks of Peony blooms. There is an individual charm in each variety that will well repay you for the whole lot. Note the general high rating. **\$13.70 value.**

12 Superb Peonies—Special, \$9.75 Postpaid

Name	Color	Blooming
8.6 Albert Crousse	Light rose-pink, shaded salmon	Late
9.0 Baroness Schroeder	Milk-white	Late midseason
8.4 Felix Crousse	Brilliant red	Late midseason
9.3 Festiva Maxima	Glistening white	Early
8.8 Karl Rosenfield	Rich velvety crimson	Midseason
8.5 Marie Lemoine	Lemon-white, grand	Very late
9.2 Mons. Jules Elie	Pale lilac-rose	Early
8.5 Octavie Demay	Delicate shell-pink	Early
8.6 Officinalis rubra plena	Rich clear red	Very early
8.7 Reine Hortense	Fluffy rose-pink	Midseason
9.0 Sarah Bernhardt	Apple-blossom-pink	Late midseason
8.0 The Moor (Single)	Crimson and gold	Midseason

10 rate applies to 5 or more of one variety; 100 rate applies to 25 or more of one variety

Cole's Standard Peony Collection, No. 1

Containing a beautiful selection of the highest class standard varieties. \$6.75 Value

9 Beautiful Peonies—Special, \$4.90 Postpaid

Name	Color	Blooming
7.8 Augustin d'Hour.....	Brilliant red.....	Midseason
8.0 Aurore.....	Beautiful lilac-white.....	Late midseason
8.0 Boule de Neige.....	Glistening white.....	Early midseason
8.1 Duchesse de Nemours.....	Sulphur-white.....	Early
7.9 Jeanne d'Arc.....	Blush-pink, with silver.....	Midseason
7.9 Mme. Ducl.....	Pale old-rose.....	Midseason
8.5 Mme. Emile Galle.....	Lavender.....	Late midseason
7.2 Rubra superba.....	Bright crimson.....	Very late
7.4 Umbellata rosea.....	Light shell-pink.....	Very early

CHOICE PEONIES, continued

8.8 Grandiflora. (Richardson, 1883.) Bright pink, shaded old-rose and white; fragrant. Tall; floriferous; heavy foliage. This beautiful, large-flowering sort is especially valuable as it extends the season, being one of the last to bloom. \$1.25 each, \$11 for 10.

7.9 Jeanne d'Arc. (Calot, 1858.) Blush-pink, with silver and white; very fragrant. A free bloomer. Midseason. 60 cts. each, \$5 for 10.

8.8 Karl Rosenfield. (Rosenfield, 1908.) Very bright, rich, velvety crimson, outer petals large and waved, central petals incurved and notched; not fragrant. Tall; free-flowering; strong stems; good foliage. Without doubt the best all-purpose red variety in the medium-price class. Midseason. \$1.25 each, \$11 for 10.

7.5 La Tulipe. (Calot, 1872.) Clear light flesh-pink, with creamy center streaked with crimson. Tall; vigorous; strong stems; good foliage. Very attractive and distinct. Early midseason. 75 cts. each, \$6.50 for 10.

7.7 Mme. de Vetry. (Guérin, 1863.) Outer petals flesh-color, center buff-white with carmine stripes. Free bloomer; dwarf habit. Medium late. Very beautiful. 50 cts. each, \$4 for 10.

7.9 Mme. Ducl. (Méchin, 1880.) Broad, flaring guards and very compact, incurved center of pale old-rose, with a lustrous, silvery sheen. Medium height; floriferous; stiff stems. Probably a better bloomer than Mons. Jules Elie, with which it is almost identical, but is more dwarf and compact. Midseason. 80 cts. each, \$7 for 10.

8.5 Mme. Emile Galle. (Crousse, 1881.) Large, lavender blooms, shading lighter in the center. Attractive and beautiful. Free bloomer and one of the finest. Late midseason. 80 cts. each, \$7 for 10.

9.4 Mme. Jules Dessert. (Dessert, 1909.) Long, smooth petals of a pearly flesh-white, graduated symmetrically about a funnel-like center, with a few golden stamens in its depths which reflect a golden glow through its translucent texture; mildly fragrant. Tall, of splendid habit and very free-flowering. Foliage is good and flowers are truly mammoth in size. Late midseason. \$2.40 each, \$21.50 for 10.

8.5 Marie Lemoine. (Calot, 1869.) Lemon-white, with a trace of crimson on edges of a few petals, the whole flower being strongly suffused with yellow from hidden stamens; develops a very large, globular, pure white flower; richly fragrant. Medium height, with very strong stems and good foliage. Very late. 90 cts. each, \$7.50 for 10.

8.6 Mikado. (Japan, 1893.) A most wonderful, tall, free-flowering, Japanese sort, with large, waved, cupped petals of dark crimson encircling a heavy cushion of golden petaloids. A gorgeous sensation. Sold recently for from \$7 to \$10 each. Midseason. \$2.60 each, \$23.50 for 10.

7.8 Modeste Guerin. (Guérin, 1845.) Dark rose-pink, sometimes called "American Beauty Peony." Large, full, and double. Medium height; floriferous. One of the showiest of the early sorts. 75 cts. each, \$6.50 for 10.

Shipping Charges Prepaid.
See page 2 for Friendship Offer



Peony Mikado

CHOICE PEONIES, continued

- 9.2 **Mons. Jules Elie.** (Crousse, 1888.) Pale lilac-rose, silver reflex. Large; compact, globular; fragrant. Early. Certainly one of the grandest sorts. \$1 each, \$9 for 10.
- 7.7 **Mons. Krelage.** (Crousse, 1883.) Amaranth-red with silver tips. Large and showy. Late midseason. \$1 each, \$9 for 10.
- 8.8 **Mons. Martin Cahuzac.** (Dessert, 1899.) Maroon-crimson, with a silky, black luster; not fragrant. Medium height; free-flowering; erect; stiff stems. Undoubtedly the best real dark Peony. Early midseason. \$1.50 each, \$12.50 for 10.
- 8.5 **Octavie Demay.** (Calot, 1867.) Delicate shell-pink with lighter collar. Dwarf habit; free bloomer. Very dainty and beautiful. Early. \$1 each, \$9 for 10.

- 8.6 **Officinalis rubra plena.** The old double red Peony of our grandmother's garden and the earliest to bloom. Few sorts can approach it in color, which is such a clear, pleasing red, free of all blue or purple tints. 90 cts. each, \$8 for 10.
- 8.6 **Primevere.** (Lemoine, 1907.) Outer petals buff; center deep sulphur-yellow; large, full blooms on tall stems. The nearest approach to a yellow in any of our Chinese class. Beautiful and rare. Midseason. \$2.60 each, \$23.50 for 10.
- 8.7 **Reine Hortense.** Syn., President Taft. (Calot, 1857.) An outstanding variety with profuse blooms of the largest size on tall, strong stems. Rose-pink, with crisp, fluffy petals of translucent texture, notched and silvered at the tips and occasionally flecked with crimson in the center. Good foliage. Midseason. \$1.30 each, \$11 for 10.



Peony Primevere

- 7.2 **Rubra Superba.** (Richardson, 1871.) Large, double flowers borne on strong stems. Color, bright crimson; fragrant. It does not show its merits until well established. By many considered the most beautiful late red Peony grown. 80 cts. each, \$7 for 10.
- 9.0 **Sarah Bernhardt.** (Lemoine, 1906.) Apple-blossom-pink petals, tipped silver. One of the most beautiful varieties, with every good characteristic: Tall, strong stems; huge flowers in clusters; delightful fragrance; beautiful foliage; sure to bloom. Late midseason. Our price is extremely reasonable for this beautiful variety. \$1.50 each, \$13 for 10.
- 7.9 **Simonne Chevalier.** (Dessert, 1902.) Pale lavender-rose; collar cream-white; fragrant. Medium height. Early. Very large flowers. \$1.50 each, \$12.50 for 10.
- 9.7 **Solange.** (Lemoine, 1907.) Compact, globular form, opening slowly and lasting a long time, either in the garden or as a cut-flower; cream-white, with a suffusion of buff and pale salmon-pink. Medium height. Really an indescribable flower of thrilling beauty, with colors in its depths that hold one spellbound. Recently sold at a much higher price. Late. \$3.90 each, \$34 for 10.

10 rate applies to 5 or more of one variety; 100 rate applies to 25 or more of one variety.

Peonies That Do Not Bloom. One often hears the remark: "What is the matter with my Peonies? They do not bloom."

There are a number of reasons for this, but undoubtedly the foremost is "Diseased Roots." Therefore we advise our customers to discard all old plants that do not bloom, replacing them with **healthy, up-to-date** varieties from a reliable nursery, and, of course, they must be planted in clean soil. Visitors to our fields always marvel at the wealth of bloom that each of our plants shows. When digging, we do not hesitate to destroy all roots that show the least semblance of disease. This naturally guarantees our friends and customers the maximum amount of success. Plant Cole's Peonies and avoid disappointment.

CHOICE PEONIES, continued

- 7.7 Suzanne Dessert.** (Dessert & Méchin, 1890.) Large, full flowers in clusters; clear china-pink; very free bloomer; good habit; showy. Midseason. \$1.25 each, \$11 for 10.
- 8.0 The Moor.** (Barr.) A beautiful single sort. Rich glowing crimson with heart of gold. Numerous large flowers on tall stems. Early midseason. \$2.25 each, \$20 for 10.
- 9.8 Therese.** (Dessert, 1904.) Enormous, long petals of pale, translucent old-rose-pink, paling toward the base and illuminated by a golden yellow glow in the depths. Medium height; strong stems; beautiful, heavy foliage. Always a mass of indescribable beauty. We consider this the most gorgeous Peony in existence. Note the rating. Mr. Judkins, our field foreman, recently made the remark that if Therese were \$50 per plant he would purchase it and have one supreme plant, rather than one hundred of the 50-cent varieties. Sold recently at \$5.50 each. Early midseason. \$1.50 each, \$12.50 for 10.

- 7.4 Umbellata Rosea.** (Dessert, 1895.) Light shell-pink; upright habit; free bloomer. The earliest Chinese sort in our collection. 60 cts. each, \$5 for 10.
- 7.6 Virginie.** (Calot, 1858.) Lively pink; fine shaped bloom; very free bloomer. Midseason. 60 cts. each, \$5 for 10.

Unnamed Varieties

These are good varieties, unnamed, that will give satisfaction to those who are not particular to have named varieties.

	Each	10
Red.....	\$0 40	\$3 50
Pink or White.....	35	3 00
Mixed.....	35	3 00

Shipping charges *prepaid*. See Friendship Offer on page 2

Cole's Supreme Peony Collection, No. 2

Note the exceptionally high rating of these varieties. It is impossible to describe in words the colors and other grand characteristics of Peonies—we have only done our best. Please read the preceding descriptions and try to get some idea of the beauty they represent. **\$14.50 Value.**

6 Exquisite Supreme Peonies—Special, \$10.85 Postpaid

Name	Color	Blooming
9.4 Mme. Jules Dessert.....	Pearly flesh-white.....	Late midseason
8.6 Mikado (Japanese).....	Crimson and gold.....	Midseason
8.8 Mons. Martin Cahuzac.....	Maroon-crimson.....	Early midseason
8.6 Primevere.....	Light yellow.....	Midseason
9.7 Solange.....	Cream-white with salmon.....	Late
9.8 Therese.....	Translucent old-rose-pink.....	Early midseason

REGAL LILY

We can hardly grow enough bulbs to supply the demand for this beautiful flower. Our sales last year totaled more than 20,000 bulbs. Although introduced from China, it has proved absolutely hardy and adaptable for practically all sections of the United States. Flowers are large, trumpet-shaped, ivory-white, shaded pink, with creamy yellow throat, delicately scented. It has a long period of blooming—from June through July. Grows 4 feet high.

Quality Bulbs Are Sure to Bloom

	Each	10
Mammoth Bulbs, 6 to 8 inches cir.....	\$0 60	\$5 00
Large Bulbs, 5 to 6 inches cir.....	45	3 50
Medium Bulbs, 4 to 5 inches cir.....	35	2 50

A REAL SPECIAL POSTPAID COLLECTION

Five 4- to 5-inch size, for \$1

Ask anyone who has planted Cole's stock what he thinks of our plants and service

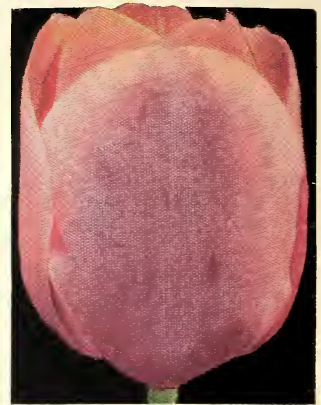




Pride of Haarlem



William Copland



Baronne de la Tonnaye

TULIPS

Tulips should be planted 6 to 8 inches apart and 4 to 5 inches deep, and given a light mulch. They can also be forced for winter blooming by placing one or more bulbs in a pot, setting the top of the bulb just below the surface of the soil and putting them away in a cool, dark place until rooted. The star (*) denotes the varieties that are best for forcing. The early Tulips are best for window-gardens and house culture. 25 bulbs of one variety sold at 100 rate.

Darwin Tulips

These are the stately, tall-growing Tulips that come into bloom about the middle of May and continue an unusually long time.

All varieties, except where noted, 30 cts. for 3;
80 cts. for 10; \$6.50 per 100

- Baronne de la Tonnaye.** Bright carmine-rose, margined blush-rose.
- ***Bartigon.** Fiery crimson. Splendid for forcing and bedding.
- ***City of Haarlem.** Deep scarlet, the center blue-black edged white. A strong variety for bedding or forcing. Very large flowers. 55 cts. for 3; \$1.50 for 10; \$12.50 per 100.
- ***Clara Butt.** Soft rosy pink. Extra fine forcer and a grand bedder.
- ***Farncombe Sanders.** Rich, brilliant rosy scarlet. One of the finest Darwins.
- Feu Brilliant.** Bright scarlet. Large and beautifully shaped flower on strong stem. One of the best. 35 cts. for 3; \$1 for 10; \$8 per 100.
- ***Gretchen.** Silvery, pale rose, flushed white. A beautiful flower of delicate color.
- Le Notre.** Beautiful lilac-rose, shaded blush.
- Madame Krelage.** Bright lilac-rose, margined pale silvery rose. Large flower.
- Massachusetts.** Vivid pink, edged rosy white. Beautiful, large flowers.
- Nora Ware.** Silvery lilac, shaded white.
- ***Pride of Haarlem.** Bright rosy crimson, with purple base. Very large flower on tall, strong stem.
- ***Princess Elizabeth.** Soft rose, with silvery margin; white base. Very beautiful.
- ***Professor Rauwenhof.** Bright cherry-red with scarlet glow.
- ***Rev. H. Ewbank.** Vivid heliotrope, lilac with lighter tint at margin. Large flower of beautiful color.
- Whistler.** Fiery scarlet. Extra.
- ***White Queen.** Creamy white, tinted rose.
- ***William Copland.** Bright purplish violet. Valuable for earliest forcing and for a dark flower in the garden.
- ***William Pitt.** Immense flowers, brilliant dark crimson.
- Zulu.** Rich velvety purple-black. Large flower of distinct shape.

Darwin Tulips in Mixture

Made up especially by us from at least 6 of our best varieties.
25 bulbs for \$1.35; 100 bulbs for \$4.90

Cottage or May-flowering Tulips

A beautiful class of single Tulips in their unique shapes and exquisite colors. They come into bloom simultaneously with the Darwins and about two weeks after the early varieties cease blooming.

All varieties, except where noted, 30 cts. for 3;
80 cts. for 10; \$6.50 per 100

- Caledonia.** Orange-scarlet, marked greenish black. Very fine for cutting.
- Ellen Willmott.** Pale yellow, bordered deep yellow; pointed flower. A beauty.
- Fairy Queen.** Rosy heliotrope, with yellow margin. A grand novelty.
- ***Gesneriana.** Dazzling scarlet; deep bluish base; large flower. One of the best.
- Golden Spire.** Orange-yellow. An exquisite, brilliant flower with a very long, pointed bud, gracefully curled at the tip. 35 cts. for 3; \$1 for 10; \$8 per 100.
- Grenadier.** Intense vermilion, with orange base; large flowers. Beautiful. 35 cts. for 3; \$1 for 10; \$8 per 100.
- ***Inglescombe Pink.** Salmon-pink. Fine forcer and bedder.
- ***Inglescombe Yellow.** Rich yellow; large flowers. Sometimes called the "Yellow Darwin."
- ***Isabella.** Cream, turning to carmine; large flower.
- Mrs. Moon.** Rich golden yellow; very large and sweet-scented. The very best late yellow Tulip. 35 cts. for 3; \$1 for 10; \$8 per 100.
- Parisian White.** Best white variety.
- Picotee.** White, with distinct pink edged border.

Special Darwin Tulip Offer T-2

100 First-Size Bulbs in Best Four Standard Varieties, four beautifully distinct colors, separate and named. Value \$6.50.

Special Only \$5.40

- 25 Baronne de la Tonnaye. Bright carmine-rose.
25 Clara Butt. Soft rosy pink.
25 Pride of Haarlem. Bright rosy crimson.
25 Inglescombe Yellow. Rich yellow.



Louis XIV



Inglescombe Yellow



Bronze Queen

Breeder Tulips

Tall, May-flowering Tulips, similar to the Darwins, but characterized by unusual colorings, ranging from golden yellow-bronze to terra cotta, purple, and wine-red.

All varieties, except where noted, 35 cts. for 3;
90 cts. for 10; \$7 per 100

- Bronze Queen.** Soft buff, inside tinged with golden bronze.
- Butterfly.** Lilac, edges light blue.
- Cardinal Manning.** Wine-red, flushed with rosy brown. Very tall.
- ***Dom Pedro.** Rich coffee-brown, shaded maroon. 40 cts. for 3; \$1.10 for 10; \$9 per 100.
- Godet Parfait.** Rich deep reddish purple. Elegant. 40 cts. for 3; \$1.10 for 10; \$9 per 100.
- Louis XIV.** Dark purple, flushed bronze, with margin of golden brown. A grand aristocrat among Tulips, far surpassing the average sort. 40 cts. for 3; \$1.10 for 10; \$9 per 100.
- Madras.** Dark bronze-yellow and old gold.
- Panorama.** Reddish mahogany, very large.
- St. James.** Rosy gold, bordered bronze. Large and beautifully distinct.
- Yellow Perfection.** Light bronze-yellow, edged clear yellow.

Early Double Tulips

These have large, very double, daintily colored flowers. Dwarf-growing; healthy foliage. Excellent for borders or for massing. Blooms at the same time as the early single varieties.

All varieties, except where noted, 35 cts. for 3;
\$1 for 10; \$8 per 100

- ***Couronne d'Or.** Beautiful, rich golden yellow. Fine forcer.
- ***Murillo.** White, shading to delicate pink. Large, beautifully shaped flower. A gem for forcing and bedding. 30 cts. for 3; 80 cts. for 10; \$6.50 per 100.
- ***Rubra Maxima.** Dazzling scarlet. An excellent variety.
- Schoonoord.** Pure white. The finest double white variety. 35 cts. for 3; 90 cts. for 10; \$7 per 100.
- ***Tournesol.** Red and yellow, edged scarlet.
- ***Vuurbaak.** Bright scarlet; large, well-shaped flowers. Splendid bedder.

You will find our bulb prices very reasonable (compare them), considering the advanced costs of bulbs, freight, and duty.

Early Single Tulips

These are the popular Early Tulips that brighten the countryside in early spring with such a beautiful range of brilliant, vivid colorings.

All varieties, except where noted, 35 cts. for 3;
90 cts. for 10; \$7.25 per 100

- Artus.** Deep scarlet, large flower. A splendid bedder. 30 cts. for 3; 80 cts. for 10; \$6.50 per 100.
- ***Belle Alliance.** Rich scarlet. One of the finest for forcing and bedding.
- ***Chrysolora.** Golden yellow; large. Excellent for forcing and bedding.
- Cottage Maid.** Rose-pink, striped white. Very pretty and dainty.
- Duchesse de Parma.** Orange-scarlet, yellow border. Good forcer and bedder.
- ***Keizerskroon.** Bright red, with golden yellow border. One of the most popular bedding Tulips. Makes a gorgeous display. 40 cts. for 3; \$1.10 for 10; \$9.50 per 100.
- La Reine.** White, with light rose. 30 cts. for 3; 80 cts. for 10; \$6.50 per 100.
- ***Prince of Austria.** Large, sweet-scented, orange-scarlet flowers. Recommended for either forcing or bedding.
- ***White Hawk.** Pure white, very large flowers. The best medium-priced white variety.
- ***Yellow Prince.** Golden yellow. Fine forcer and good bedder.



Flower Sprays of Bleeding-Heart

BLEEDING-HEART SPECIAL

True, old-fashioned Bleeding-Heart, with long racemes of beautiful, heart-shaped, rose-pink flowers. Fall planting is necessary for best results. Large plants, regular 60-ct. size, special price, only 45 cts. each; 2 for 75 cts.; 5 for \$1.75.

NARCISSUS

For bedding, Narcissus should be planted the same as tulips, or they may be forced in pots for winter cutting or decoration. Many varieties are particularly desirable for cutting on account of their long stems and graceful, sweet-scented flowers. When we learned of the embargo that was to go into effect on this fine class of bulbs, we decided to do our best to grow a sufficient quantity to accommodate our trade. We have succeeded in producing a limited quantity of fine bulbs that we are sure will give the best of satisfaction. Our acres of Narcissus were a solid mass of color when in bloom last spring, and they will do as well for you.



Poetaz, Elvira (left) Victoria (bottom) King Alfred (top)

Single Narcissus

- Barri Conspicuus.** Petals yellow; cup fine scarlet. 45 cts. for 3; \$1.20 for 10; \$10 per 100.
- Emperor.** Golden yellow trumpet; primrose perianth. 50 cts. for 3; \$1.50 for 10; \$12.50 per 100.
- Empress.** White perianth; yellow trumpet. 50 cts. for 3; \$1.50 for 10; \$12.50 per 100.
- Golden Spur.** Large; rich yellow. 50 cts. for 3; \$1.50 for 10; \$12.50 per 100.
- King Alfred.** Large, golden yellow trumpet; free bloomer. A wonderful Narcissus, with a beautifully frilled, double crown. 75 cts. for 3; \$2.30 for 10; \$20 per 100.
- Lucifer.** White perianth; orange-red cup. 50 cts. for 3; \$1.50 for 10; \$12.50 per 100.
- Mme. de Graaff.** One of the most beautiful white Narcissus. Fine for late forcing. 50 cts. for 3; \$1.50 for 10; \$13 per 100.
- Mrs. Langtry.** Cup and perianth white; cup edged bright yellow. 45 cts. for 3; \$1.20 for 10; \$10 per 100.
- Poeticus Ornatus.** White perianth; yellow cup, edged scarlet. 45 cts. for 3; \$1.25 for 10; \$10 per 100.
- Poetaz, Elvira.** White, with yellow eye. 50 cts. for 3; \$1.50 for 10; \$12.50 per 100.
- Princeps.** Rich yellow trumpet; sulphur-white perianth. 45 cts. for 3; \$1.20 for 10; \$10 per 100.
- Sir Watkin.** Sulphur perianth; yellow cup. 50 cts. for 3; \$1.50 for 10; \$12.50 per 100.
- Victoria.** Creamy white perianth; rich yellow trumpet. 50 cts. for 3; \$1.50 for 10; \$12.50 per 100.
- White Lady.** Broad, white perianth; dainty crinkled cup of a beautiful canary-yellow. 45 cts. for 3; \$1.20 for 10; \$10 per 100.

Double Narcissus

- Alba Plena Odorata.** White. 45 cts. for 3; \$1.20 for 10; \$10 per 100.
- Orange Phoenix.** Orange and yellow. 50 cts. for 3; \$1.50 for 10; \$12.50 per 100.
- Sulphur Phoenix.** Large, double white flower, with sulphur center. 50 cts. for 3; \$1.50 for 10; \$12.50 per 100.
- Von Sion.** Pure yellow. 45 cts. for 3; \$1.20 for 10; \$10 per 100.

LILIES

- Canadense** (Meadow Lily). Grows 6 feet tall, with drooping, bell-shaped red and yellow flowers. 25 cts. each; \$2 for 10.
- Candidum** (Madonna Lily). Large, pure white. Fine for winter flowering in pots. 40 cts. each; \$3.50 for 10.
- Regale** (Regal Lily). See page 7.

CROCUS

Crocuses are especially desirable for early blooming, and are most effective when planted along the border or scattered in the lawn. The named varieties are Mammoth Bulbs; mixed colors are First Size Bulbs.

- Mont Blanc.** White. 65 cts. for 10; \$5 per 100.
- Purpurea Grandiflora.** Large; dark purple. 65 cts. for 10; \$5 per 100.
- Sir Walter Scott.** Striped. 65 cts. for 10; \$5 per 100.
- Yellow.** Large-flowered. 70 cts. for 10; \$5.50 per 100.
- Mixed Colors,** Blue and Purple, White, Yellow, Striped, all colors, 50 cts. for 10; \$4 per 100.

Remember, when purchasing Tulips and other bulbs, that to have the best success you must have the **FIRST-SIZE BULBS**. Many stores and mail-order houses sell the smaller size bulbs, and, naturally, can undersell those who handle strictly **FIRST SIZE**. You want sure-to-bloom bulbs, and you want large flowers. Cole has always made a practice of handling quality plants only. Our bulbs are guaranteed First Size.

For a spectacular show of color in the border, plant *Oriental Poppies*

ORIENTAL POPPIES (*Papaver Orientale*)

Everyone knows the common variety that makes such a gorgeous spectacle in May and June, with a great multitude of mammoth, brilliant crimson flowers, towering above the other garden flowers. It simply seems to talk, telling us that it is the King of the Garden. But you should also know the even more beautiful **Selected Hybrid Varieties**, and you have a remarkable opportunity to get a grand collection here and at very reasonable prices. Of course, our plants are all field-grown and especially selected for size. Oriental Poppies are easy to make live when planted in the months of August, September, and October.

Popular Common Oriental Poppy. Crimson, with darker center. 25 cts. each; \$2 for 10.

Select Hybrid Varieties

Apricot (Apricot Queen). Reddish apricot. 60 cts. each; \$5 for 10.

Brightness. Bright orange-scarlet. 50 cts. each; \$4 for 10.

Enfield Beauty. Beautiful salmon, with maroon base. 75 cts. each; \$6.50 for 10.

Goldschmidt. Orange-scarlet, of medium size. 60 cts. each; \$5 for 10.

Grand Mogul. Dark red, covered with large blotches. A good grower. 75 cts. each; \$6.50 for 10.

Mrs. Perry. Probably the most satisfactory of the Hybrid Oriental Poppies, being very thrifty, large and floriferous. Pretty orange-apricot. 30 cts. each; \$2.50 for 10.

Perry's White. The flowers are large, with a delicate, satiny white texture and a crimson-maroon blotch at the base of each petal. A sensation among Poppies. 45 cts. each; \$3.50 for 10.

Princess Ena. Beautiful orange-salmon; tulip-shaped and of medium size. 50 cts. each; \$4 for 10.

HYACINTHS

Hyacinths are particularly desirable for growing in pots in the house. Set the top of the bulb just at the surface of the soil. They may also be grown in glasses of water, the base of the bulb just above the surface of the water. Change the water every week. Set the pots or glasses away in a cool, dark place until the roots are formed. They are sure to give satisfaction. They can be bedded the same as tulips and make wonderfully gorgeous beds in the early spring. Set the bulbs 6 inches apart and 6 inches deep to the bottom of the bulb.

Single Unnamed Colors

20 cts. each, \$1.60 for 10

White	Yellow
Light Blue	Rose
Red	Dark Blue

Single Named Hyacinths

25 cts. each, \$1.90 for 10

Gertrude. Pink.
Grand Maitre. Blue.
King of the Blues.
Lady Derby. Pink.
L'Innocence. White.
Queen of the Pinks.
Queen of the Blues.
Yellow Hammer.

Double Named Hyacinths

25 cts. each, \$1.90 for 10

La Grandesse. White.
Bouquet Tendre. Pink.
President Roosevelt. Pink.

SCILLA

Sibirica. Bell-shaped blossoms of bright blue. Early flowering. 25 cts. for 3; 65 cts. for 10; \$5 per 100.

SNOWDROPS

Delicate white bells. The first flower to bloom in the spring. 25 cts. for 3; 60 cts. for 10; \$4.50 per 100.

10 rate applies to 5 or more of one variety



Oriental Poppies

IRIS GERMANICA

German Iris • Fleur-de-Lis

Few plants will give as large returns for as small an investment. They thrive in nearly any location and with the least care. The orchid-like flowers are produced on short stems 2 to 3 feet high and in a great number of colors and combination of colors, often in the same flower. In the descriptions the upright petals are called "standards" and the lower petals "falls."

All varieties listed below, 25 cts. each, \$2 for 10, \$15 per 100

Candelabra. Deep blue, flecked with white.

Celeste. Standards blue; falls deep blue.

Florentina. Light blue.

Florentina Alba. Creamy white, faintly flushed lavender.

Lohengrin. Flowers extra large, soft cattleya-rose.

Mme. Chereau. White, elegantly fringed or flilled azure-blue.

Mrs. H. Darwin. Standards snow-white; falls white, shaded to violet at the base.

Mrs. Neubronner. Very deep golden yellow. Probably the deepest yellow of all varieties. Comparatively early.

Pallida, Albert Victor. Standards soft blue; falls beautiful lavender. Very large.

Pallida Dalmatica. One of the best and largest flowering Irises.

Lavender-blue, shading to a pale silvery blue at the base.

Perfection. Standards light blue with black-violet falls. Blooms freely and makes an effective dark foil for the lighter colors.

Princess Victoria Louise. Standards a light sulphur-yellow, with rich violet-red falls, edged creamy white.

Queen of May. Rosy lavender. 2 feet.

Rhein Nixe. Standards pure white; falls deep violet-blue with white edge. A fine sort.

Sherwin Wright. Solid golden yellow.

Violaeca Grandiflora. Rich blue standards and violet-blue falls.

Yields many large flowers.

SPECIAL OFFER

10 plants from 10 different kinds (mixed) for \$1.50.

100 plants from 10 different kinds (mixed) for \$9.75.

500 plants from 10 different kinds (mixed) for \$32.



Shekinah Iris

Cole's Choice Collection

Ambassadeur
Lent A. Williamson
Lord of June
Opera
Shekinah

One each of the above 5 plants,

\$1.75 (value \$2.20)

Two each of the above 5 plants,

\$3.20 (value \$4.40)

Beautiful New Creations

You cannot know the grandeur of the present day Iris until you have seen these mammoth new varieties.

8.9 Alcazar. Standards soft blue; falls deep, brilliant purple. A grand, tall, large-flowering Iris. 35 cts. each; \$3 for 10.

9.4 Ambassadeur. Standards velvety purple; falls velvety purple-maroon. Very large flowers on long stems. A beautiful stately Iris. 50 cts. each; \$4 for 10.

9.2 Asia. Standards pale silvery lavender deepening at the base to golden yellow; falls pale reddish purple, lighter at the edges. This wonderful plant, introduced in 1920, will be an aristocrat among Iris for many years to come. \$1.50 each; \$13.50 for 10.

9.0 Ballerine. Standards light violet-blue; falls deeper. Large, well-formed flowers; fragrant. At the top of the list in its color. Introduced 1920. 80 cts. each; \$7 for 10.

8.6 Gold Imperial. Chrome-yellow throughout, except for conspicuous orange beard. A leader among the new yellows. Very brilliant and unique in coloring. \$1.25 each; \$11 for 10.



Ambassadeur Iris

SHIPPING CHARGES PREPAID BY COLE

BEAUTIFUL NEW CREATIONS IN GERMAN IRIS, continued

- 8.6 Isoline.** Standards silvery rose, flushed bronze; falls mauve, shot with gold—a most attractive coloring. 40 cts. each; \$3.50 for 10.
- 7.8 King.** Standards clear yellow; falls rich maroon, bordered yellow. 35 cts. each; \$3 for 10.
- 9.6 Lent A. Williamson.** Standards bright lobelia-blue blended with yellow toward base; falls velvety pansy-violet. Said to be the best Iris produced in America. Mammoth flowers. 40 cts. each; \$3 for 10.
- 9.1 Lord of June.** Standards lavender-blue; falls deep aniline-blue; massive flowers of perfect form and a soft wonderful color. 50 cts. each; \$4 for 10.
- 8.7 Magnifica.** Standards light violet-blue; falls dark reddish purple. Very large flowers and sweet-scented. Justly called Magnificent. Introduced 1920. 80 cts. each; \$7 for 10.
- 8.4 Monsignor.** Standards satiny violet; falls velvety purple-crimson; very large flowers. 30 cts. each, \$2.50 for 10.
- 8.2 Opera.** Standards reddish lilac; falls dark velvety purple-violet. Greatly admired by all Iris-lovers. Distinct. 40 cts. each; \$3 for 10.
- 9.1 Queen Caterina.** Large, pale lavender-violet that has proved most popular. A gorgeous flower as the rating 9.1 proves. 40 cts. each; \$3 for 10.
- 8.4 Shekinah.** Clear, soft yellow, shaded through the center. One of the finest yellow Irises. Scarce and in great demand. 40 cts. each; \$3 for 10.
- 9.3 Souv. de Mme. Gaudichau.** Tall, early, and distinct. A very rich deep velvety purple. Probably the finest dark colored Iris in existence today. Although introduced in 1914, this Royal Iris is still to be had only in small quantities due to the continuous depleting of stock through heavy demand. 65 cts. each; \$5.50 for 10.

SPECIAL OFFER.—15 German Iris (1 each of these New Creations) for only \$5.90. Value \$9.

IRIS KAEMPFERI (Japanese Iris)

The Japanese Iris is truly a wonderful flower, combining remarkable, deep rich colors and markings and large size, the flowers being 5 to 7 inches across. Plant in well-drained, rich soil; water freely when coming into bud and flower. For cut-flowers they should be cut before the buds open and placed in water. Japanese Iris have either 3 or 6 petals, the 6-petaled varieties often being called double flowered. Bloom in July on long, upright stems, 2½ to 3 feet high. Planting-time, early fall.

All varieties of Japanese Iris, except as noted, 35 cts. each, \$3 for 10

Crimson Tuft. Falls light reddish purple, shading to a darker purple toward the center, in beautiful contrast with the bright yellow markings at the base of the petals; throat pure white, formed by unusually wide, well formed anthers, delicately tipped with pink. Three petals. Midseason.

Double Blue Bell. Deepest blue, orange center; anthers white, shaded to blue. Very late. Six petals.

Gold Bound. Creamy white, orange center. Double. Early.

Kumo-no-Obi. Falls distinct violet, with heavy, white veins, terminating before reaching the edge of the petals. Center of petal streaked yellow. Throat pure white and somewhat double; anthers tipped very pale violet. Six petals. Midseason.

Mahogany. Rich royal-purple, blue anthers and yellow throat; flowers of great substance; six petals. Midseason.

Midnight. The deepest velvety purple. Mammoth single flowers. Late. This one is gorgeous and different. 50 cts. each; \$4 for 10.

Ondine. White, with blue veins, giving a pearly, glistening appearance. Single. Midseason.

Orchid Queen. Falls large and uniform in size, white, veined with a deep orchid from center to edge; throat pale orchid. A three-petaled variety with three secondary petals of deep orchid, very finely margined white. Early. 50 cts. each; \$4 for 10.

Purple and Gold. Rich violet-purple. Midseason. Double.

Tokio. The late white, wanted in every collection.



Japanese Iris

10 beautiful Japanese Iris (1 each of the above sorts) for \$2.90. Value \$3.80

IRIS SIBIRICA

Tall growing purple Iris, suitable for border of streams or ponds. 4 feet. 20 cts. each; \$1.50 for 10; \$8 per 100; \$40 per 1000.

Snow Queen. Abundant flowers of a pure snow-white. 3 feet. 25 cts. each; \$2 for 10.

PHLOX

Everyone knows this stately old plant, but few realize and know the beauty of the gloriously colored newer varieties. The price always tells which is best, and what is a few cents more when you will have the plant to look at for years?

All varieties, except where noted, 25 cts. each, \$2 for 10



Mrs. Milly van Hoboken

- Alcestes.** Violet, shading to light blue.
Astrild. Carmine. Fine. 30 cts. each.
Athis. Salmon-pink.
Baron von Dedem. Lively scarlet. 40 cts. each.
Baur's Pink. Bright, deep pink. An improved Sunset.
B. Comte. Deep, rich ox-blood-red. A fine sort. 35 cts. each; \$3 for 10.

- Beacon.** Brilliant cherry-red. A most striking, tall-growing variety.
Bridesmaid. White, carmine eye.
Brilliant. Clear blood-red. New. 35 cts. each.
Commander. Fiery crimson-red, with darker eye. One of the most striking new sorts. 35 cts. each; \$3 for 10.
Crepuscule. Rose-lilac, tinged white. Extra.
Eclairer. Brilliant rosy magenta, white eye.
Europe. White, crimson eye. Best of type.
Fernand Cortez. Purple-red.
Feuerbrandt. Beautiful orange-scarlet. New. 40 cts. each.
Frau Anton Buchner. A beautiful white variety, sometimes tinged pink.
Independence. Pure white. Old but good.
Jules Sandeau. Pure pink. Dwarf. Mammoth flowers.
Lassburg. Fine white.
Miss Lingard. Early; waxy white.
Mrs. Milly van Hoboken. Very large; soft pink. A pleasing color. 40 cts. each; \$3.50 for 10.
Mrs. Scholten. Large; dark salmon-pink trusses. 40 cts. each; \$3.50 for 10.
Pantheon. Soft rose-pink. Beautiful.
Peachblow. Delicate pink.
Pecheur d'Island. Deep red; tall; good.
Professor Virchow. Bright carmine and orange-scarlet. 30 cts. each.
Rheinlander. Salmon-pink, claret eye. A fine sort. Rather dwarf.
Sir Edwin Landseer. Light red.
Special French. Glowing pink; mammoth trusses. 30 cts. each.
Widar. Light reddish violet, white eye. Novelty. 30 cts. each.
William Ramsey. Very deep velvety purple. A wonderful recent introduction. Darker than any other Phlox. 35 cts. each.

10 rate applies to 5 or more of one variety

Cole's Special Collection of 12 Hardy Phlox. Offer A-21

Athis	Bridesmaid	Fernand Cortez	Pantheon	[One each of this offer (12 plants), \$2.20.] [Two each of this offer (24 plants), \$3.95.]
B. Comte	Crepuscule	Lassburg	Pecheur d'Island	
Beacon	Eclairer	Miss Lingard	Special French	

Fall Is the Best Time to Plant These Glorious Lilacs

Nearly all shrubs can be planted in the fall to your advantage. However, early-starting varieties, such as Lilacs, require fall planting for best results.

Cole's Favorite French Lilac Collection

Strong plants, 1½ to 2 ft., 75 cts. each; 2 to 3 ft., 95 cts. each; 3 to 4 ft., \$1.25 each

SPECIAL OFFERS

5 wonderful French Hybrid Lilacs (1 of each), including the beautiful Gloire de Lorraine

OFFER K-3: 5 thrifty plants, 1½ to 2 ft., for only \$2.90 OFFER K-4: 5 strong plants, 2 to 3 ft., for only \$3.95
 OFFER K-5: 5 extra-heavy plants, 3 to 4 ft., for only \$4.95

Read the descriptions and note the grand display we have worked into this collection.

- Belle de Nancy.** Double. Satiny pink.
Gloire de Lorraine. A most beautiful new variety. Heavily blue flowers of mammoth size. 25 cts. extra.
Ludwig Spaeth. Single. Deep rich red. One of the largest flowering sorts.

- Michael Buchner.** A rather dwarf plant that is extremely profuse with its restful, soft lilac, double flowers, interior shaded blue.
Mme. Abel Chatenay. Double, pure glistening white.

SEE SHRUB LIST FOR OTHER LILACS

REMEMBER—Cole Prepays the Shipping Charges. No worry about EXTRA COSTS



Berries of *Berberis thunbergii*



Forsythia



Philadelphus virginalis

ORNAMENTAL SHRUBS

The varieties offered here are exceptionally hardy. Stock planted this fall will have a big lead over that planted next spring. **Note the Special Prices. Reduced as much as 30 per cent.**

BERBERIS thunbergii. The well-known Japanese Barberry, with lustrous foliage and brilliant berries. Used both for hedge and specimen planting. 12 to 18 in., 60 cts. for 3; \$1.50 for 10; \$2.50 for 25. 18 to 24 in., \$1 for 3; \$2.50 for 10; \$5 for 25.

CORNUS sibirica (Coral Dogwood). Fine shrub. Especially conspicuous in winter with its bright red branches. Attains 5 to 6 feet. 2 to 3 ft., 50 cts. each; \$1.25 for 3. 3 to 4 ft., 65 cts. each; \$1.65 for 3.

DEUTZIA gracilis. Dwarf, bushy shrubs to 2½ feet, gracefully covered with white blooms in May. 15 to 18 in., 50 cts. each; \$1.25 for 3. 18 to 24 in., 60 cts. each; \$1.50 for 3.

FORSYTHIA intermedia spectabilis (Showy Border Forsythia). A new Golden Bell that is by all odds a great improvement, being the most floriferous, extremely hardy, and having very large, deep golden flowers in early April. Attains 8 feet. 2 to 3 ft., 60 cts. each; \$1.50 for 3. 3 to 4 ft., 75 cts. each; \$1.95 for 3.

HYDRANGEA arborescens grandiflora (Snowhill Hydrangea). Large, flat white flowers in early July. Compact; bushy. Glorious foliage. Attains 5 to 6 feet. 2 to 3 ft., 60 cts. each; \$1.50 for 3. (Regular 75-ct. size.)

H. paniculata grandiflora (Peegee Hydrangea). Gorgeous pyramids of white flowers late in July, changing to pink and bronze and lasting until winter. Very striking. 2 to 3 ft., 60 cts. each; \$1.50 for 3. (Regular 75-ct. size.)

LIGUSTRUM amurense (Amur Privet). Valued above the well-known California privet for hedges because of its extreme hardiness. Bushy, 12 to 18 in., 65 cts. for 5; \$2.25 for 25. Heavy, 1½ to 2 ft., 75 cts. for 5; \$3 for 25. Extra strong, 2 to 3 ft., \$1 for 5; \$4 for 25.

PHILADELPHUS virginalis (Mock Orange). Sensational new semi-double variety. Multitudes of large, pearly white, extremely fragrant flowers about 2 inches across. Attains 8 feet. 2 to 3 ft., 60 cts. each; \$1.50 for 3. (Regular 75-ct. size.)

SPIRÆA, Anthony Waterer. Popular, dwarf, bushy Spirea with red flowers from June till frost. Attains 2½ to 3 feet. 1½ to 2 ft., 50 cts. each; \$1.25 for 3. (Usually sold for 75 cts. each.)

S. multiflora. Similar but superior to *S. thunbergii*. Graceful, slender, drooping branches and narrow, lance-leaved foliage. White flowers. One of the first to bloom. Gives a most luxuriant, feathery appearance. Attains 5 feet. 2 to 3 ft., 60 cts. each; \$1.50 for 3.

Spiræa vanhouttei. Our good old Bridal Wreath. Deservedly popular and in great demand. Long, sweeping sprays of white flowers in the latter part of May. Attains 6 to 8 feet. 2 to 3 ft., 40 cts. each; \$1 for 3; \$2.90 for 10. 3 to 4 ft., 50 cts. each; \$1.25 for 3; \$3.90 for 10. 4 to 5 ft., 70 cts. each; \$1.80 for 3; \$4.90 for 10. Usually sold much higher.

SAMBUCUS aurea (Golden Elder). A most valuable contrast shrub with bright golden foliage. Attains 8 to 10 feet. 3 to 4 ft., 50 cts. each; \$1.25 for 3. (Regular 65-ct. size.)

SYMPHORICARPOS racemosus (Snowberry). Graceful, spreading shrub with multitudes of large, waxy white berries in the fall. Fine foliage. Adapted to either shady or sunny places. Attains 4 to 5 feet. 2 to 3 ft., 50 cts. each; \$1.25 for 3. 3 to 4 ft., 70 cts. each; \$1.80 for 3.

SYRINGA rothomagensis (Chinese Lilac). The Red Persian Lilac that attracts unending attention. Attains 10 feet. 2 to 3 ft., 75 cts. each; \$1.95 for 3. 3 to 4 ft., 90 cts. each; \$2.40 for 3.

S. persica (Persian Lilac). Always admired with its graceful, drooping branches and pleasing, soft lavender flowers in wonderful profusion. Attains 8 feet. 2 to 3 ft., 60 cts. each; \$1.50 for 3. (Regular 75-ct. size.) 3 to 4 ft., 75 cts. each; \$1.95 for 3. (Regular \$1 size.)

S. vulgaris. The Common Purple Lilac so well loved in our old-fashioned gardens. Attains 12 to 15 feet. 2 to 3 ft., 50 cts. each; \$1.25 for 3. 3 to 4 ft., 65 cts. each; \$1.65 for 3. Extra bushy, 4 to 5 ft., 90 cts. each; \$2.40 for 3.

S. vulgaris alba (Common White Lilac). 2 to 3 ft., 75 cts. each; \$1.95 for 3. 3 to 4 ft., 90 cts. each; \$2.40 for 3.

VIBURNUM opulus (European Cranberry Bush). Fine foliage. White flowers, followed by abundant large clusters of scarlet fruit. Very attractive and a lure for the song-birds. Attains 12 feet. 2 to 3 ft., 60 cts. each; \$1.50 for 3. (Regularly 75 cts. each.) 3 to 4 ft., 75 cts. each; \$1.95 for 3. (Regularly \$1 each.)

V. opulus sterile (Common Snowball). Balls of pure white flowers 4 to 5 inches in diameter in May and June. Attains 15 feet. 2 to 3 ft., 60 cts. each; \$1.50 for 3. (Regularly 75 cts. each.) 3 to 4 ft., 75 cts. each; \$1.95 for 3. (Regularly \$1 each.)

WEIGELA, Abel Carriere. Better in every way than the well-known Rosea. Beautiful foliage and very prolific with its glowing, deep rose-colored flowers. Attains 8 feet. 2 to 3 ft., 50 cts. each; \$1.25 for 3. (Regularly 75 cts. each.) 3 to 4 ft., 70 cts. each; \$1.80 for 3. (Regularly \$1 each.)

Plant Roses Now!



Betty Uprichard



Sensation

ROSSES planted this fall, in the manner advised in our free booklet "How to Make Things Grow," will give you better results in every respect than spring-planted stock. We offer here a concise list of only the choicest everblooming varieties. (See our 64-page Catalogue for other varieties.)

All varieties, Cole's 2-yr. Extra Size (the finest plants obtainable), 90 cts. each

Special Offers—Your Selection

No. R-4A: 3 Extra Size Roses for\$2 50
No. R-3A: 6 Extra Size Roses for 4 50
No. R-2A: 12 Extra Size Roses for 8 25

Cole's 2-yr. Medium Size (as fine as most "first grade" Roses), 60 cts. each

Special Offers—Your Selection

No. R-4B: 3 Medium Size Roses for \$1 65
No. R-3B: 6 Medium Size Roses for 3 10
No. R-2B: 12 Medium Size Roses for 5 25

Betty Uprichard. *New.* Sensational. Orange-carmine, interior delicate salmon-pink; large; spicy fragrance.

Dame Edith Helen. *New.* An indescribable glowing pink. Generally sold at \$1.50.

Eldorado. Beautiful clear yellow. Strong grower.

Elvira Aramayo. Flaming orange-carmine toned with salmon.

Etoile de France. Large; velvety crimson. Profuse.

Frau Karl Druschki. Purest white. Unsurpassed.

Gruss an Teplitz. Vivid scarlet. Profuse. Elegant bedding Rose.

Lady Inchiquin. Orange-cerise. A sensational novelty.

Mme. Butterfly. Pink, apricot, and gold. Profuse.

Mme. Edouard Herriot. Coral-red, shading to yellow and rose-pink.

Mme. Jules Bouche. White, with primrose center; satiny texture.

Mrs. Aaron Ward. Indian yellow, shaded salmon-rose.

Mrs. Ambrose Ricardo. Pale pink with light yellow. Strong grower.

Mrs. E. P. Thom (Golden Pernet). Deep golden yellow. Far superior to the famed Souv. de Claudius Pernet.

Sensation. Deep, velvety red; large and fine.

Una Wallace. Soft cherry-rose. Beautiful, strong, and profuse.

Willowmere. Rich shrimp-pink. More satisfactory for garden use than Los Angeles.

Wilhelm Kordes. Vivid salmon-pink shaded with orange and yellow. An astounding new variety.

Two Sensational New Roses

(Cannot be included in Special Offers)

Lady Margaret Stewart. Bright golden yellow, stained orange. \$1.50 each.

Talisman. Famed novelty Rose. Golden yellow, stained with copper, orange, and rose. Although wonderful under perfect conditions, we prefer Lady Margaret Stewart. \$1.75 each.



Mme. Butterfly



Willowmere



Mrs. E. P. Thom



Mme. Jules Bouche



Dame Edith Helen



Etoile de France

THE COLE NURSERY CO.
Painesville, Ohio